



Company : Beach Petroleum Ltd

Well : Fermat-1

Interval : 71.00 - 3587.39 meters

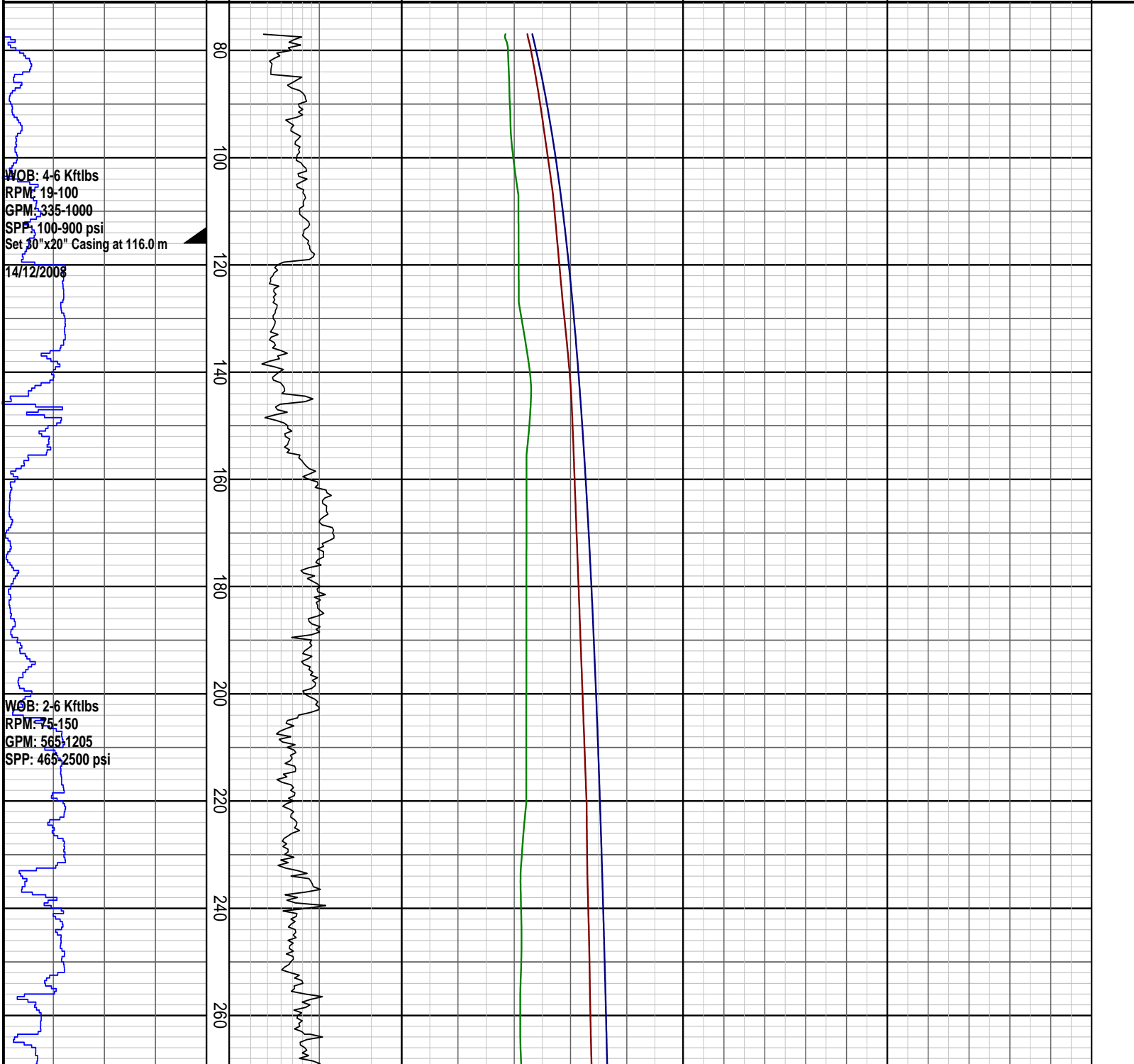
Created : 09/Jan/2009 5:58:16 PM



INTEQ

PRESSURE DATA PLOT

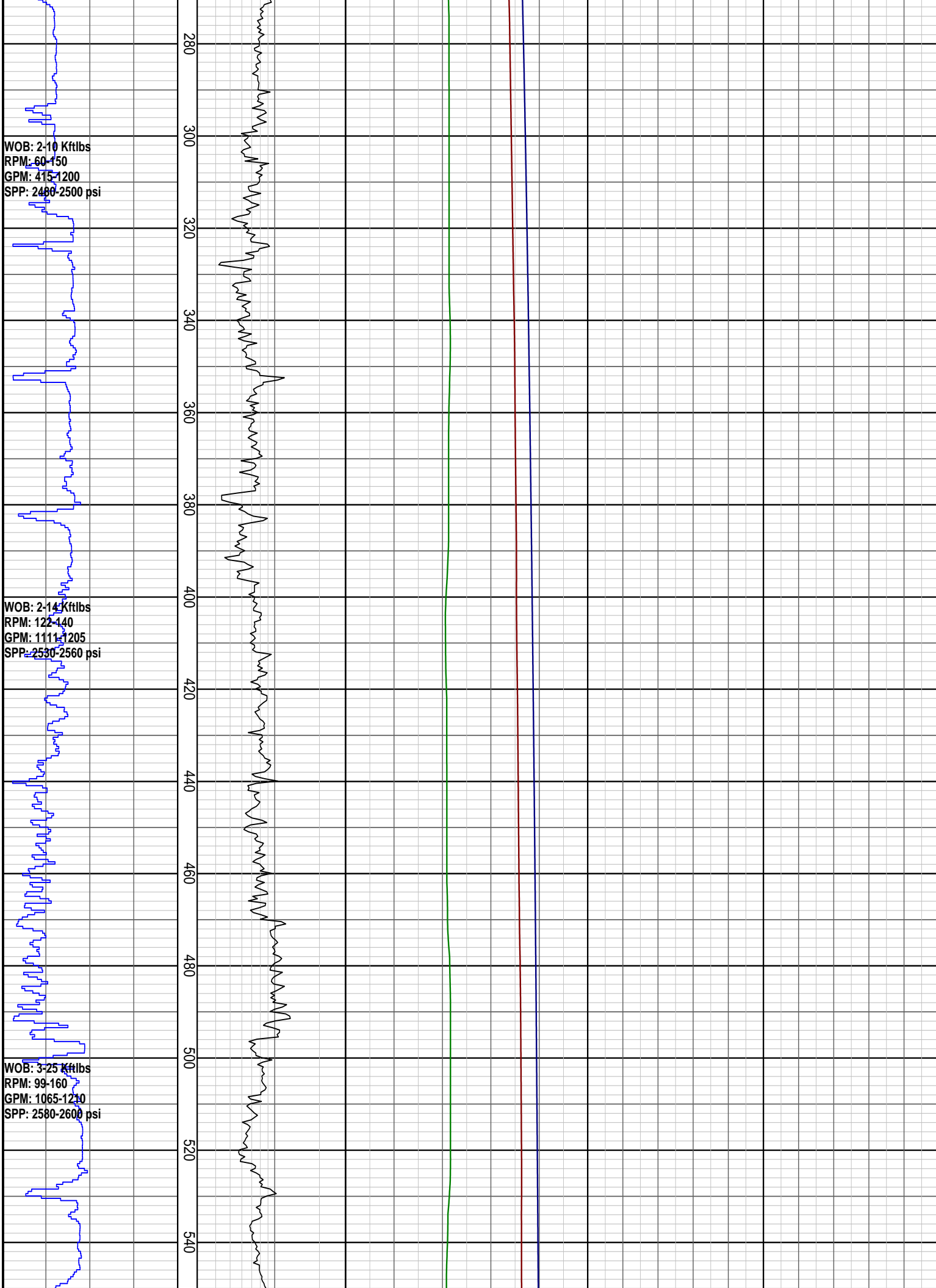
Rate of Penetration ROP	DRILLING EXPONENT DXC	PRESSURE DATA Pore Pressure	TEMPERATURE Temperature Out	GAS Total Gas	INTERPRETED LITHOLOGY
50 100 150 200 m/hr	0.3 3	4 8 12 16 20 ppg	20 40 60 80 100 degC	50 100 150 200 250 unit	
		Fracture Pressure 4 8 12 16 20 ppg			
		Overburden Gradient 4 8 12 16 20 ppg			

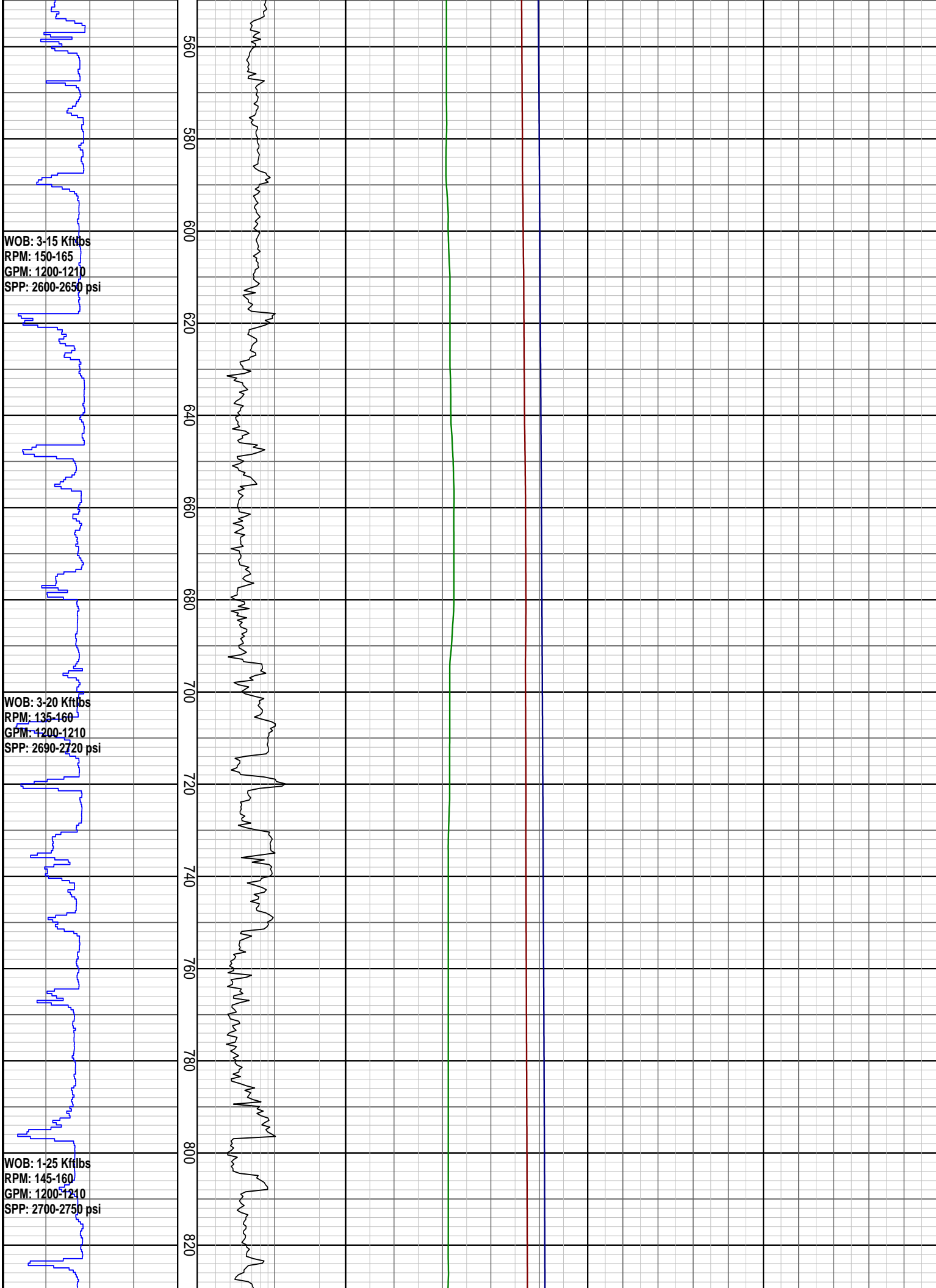


WOB: 4-6 Kftlbs
 RPM: 19-100
 GPM: 335-1000
 SPP: 100-900 psi
 Set 30" x 20" Casing at 116.0 m

14/12/2008

WOB: 2-6 Kftlbs
 RPM: 75-150
 GPM: 565-1205
 SPP: 465-2500 psi





WOB: 3-15 Kftlbs
RPM: 150-165
GPM: 1200-1210
SPP: 2600-2650 psi

WOB: 3-20 Kftlbs
RPM: 135-160
GPM: 1200-1210
SPP: 2690-2720 psi

WOB: 1-25 Kftlbs
RPM: 145-160
GPM: 1200-1210
SPP: 2700-2750 psi

16/12/2008

WOB: 4-25 Kftlbs
RPM: 120-155
GPM: 1200-1210
SPP: 2780-2800 psi

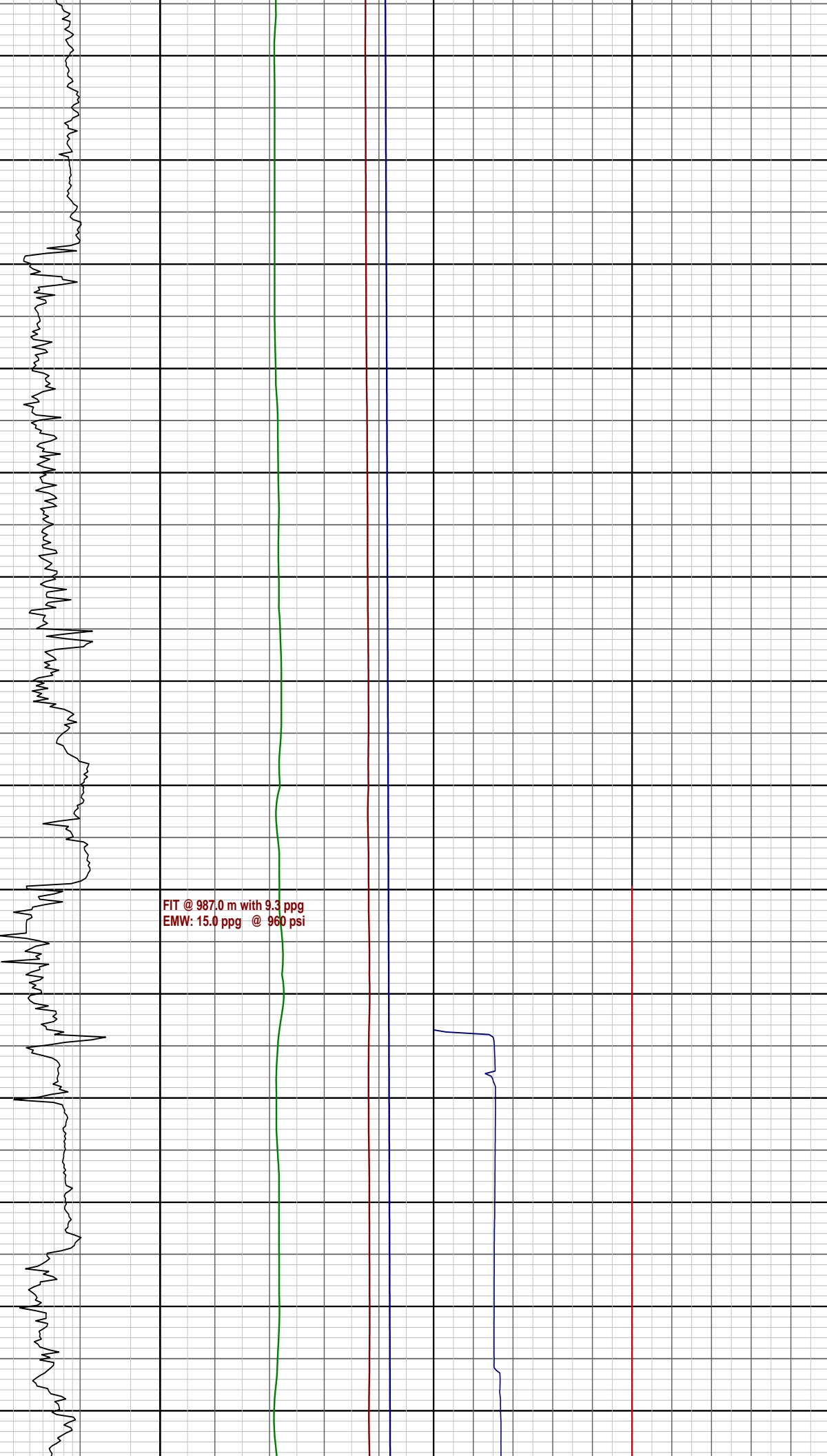
WOB: 4-25 Kftlbs
RPM: 105-155
GPM: 1200-1210
SPP: 2300-2800 psi
Set 13 3/8" Casing at 987.0 m

19/12/2008

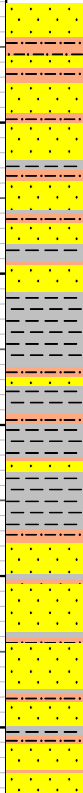
20/12/2008

WOB: 1-8 Kftlbs
RPM: 20-177
GPM: 290-1006

840
860
880
900
920
940
960
980
1000
1020
1040
1060
1080
1100



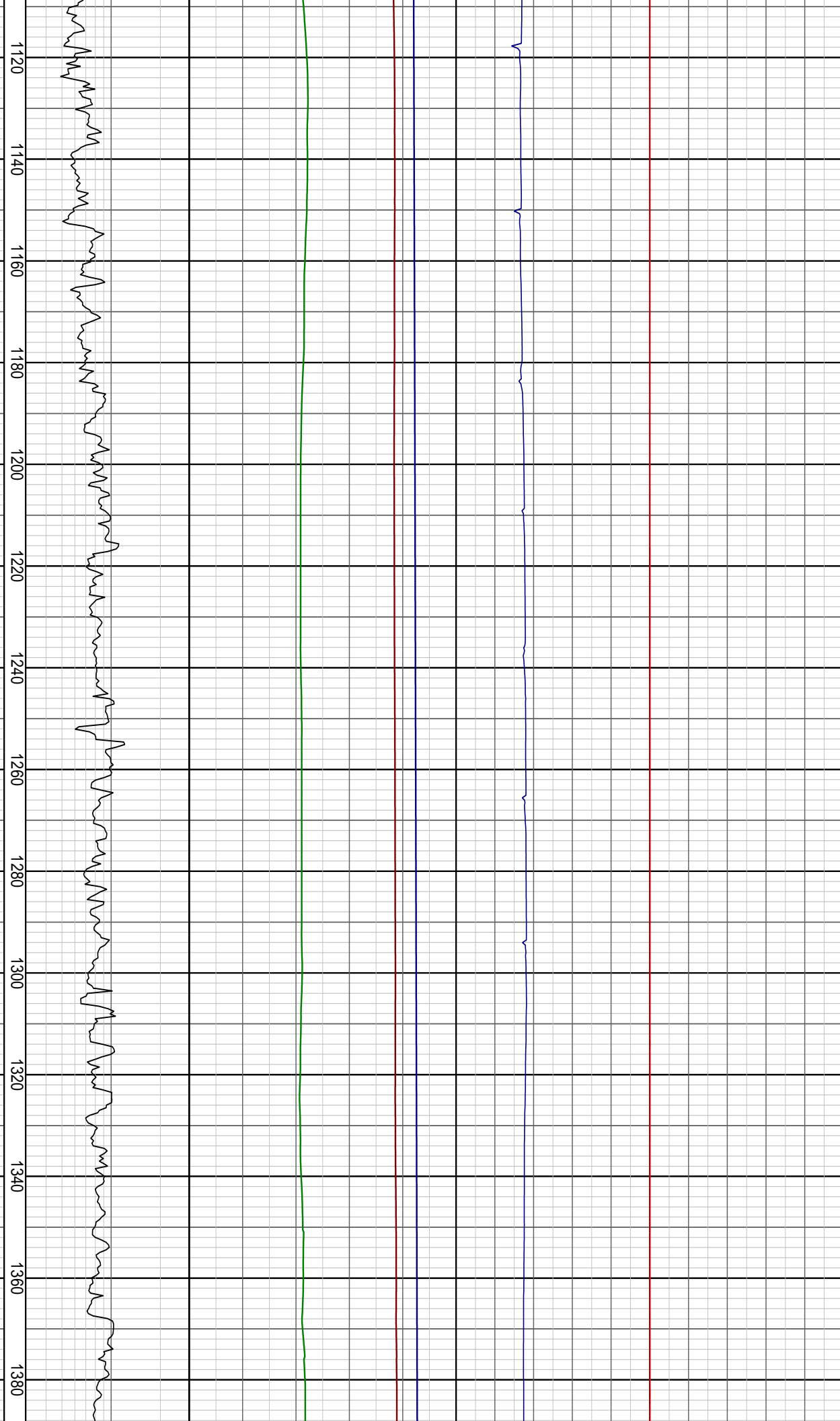
FIT @ 987.0 m with 9.3 ppg
EMW: 15.0 ppg @ 960 psi



GPM: 230-1000
SPP: 915-2045 psi

WOB: 1-14 Kftlbs
RPM: 94-177
GPM: 801-961
SPP: 1249-1877 psi

WOB: 2-17 Kftlbs
RPM: 80-130
GPM: 801-903
SPP: 1358-1724 psi



WOB: 4-18 Kftlbs
RPM: 120-148
GPM: 798-807
SPP: 1445-1500 psi

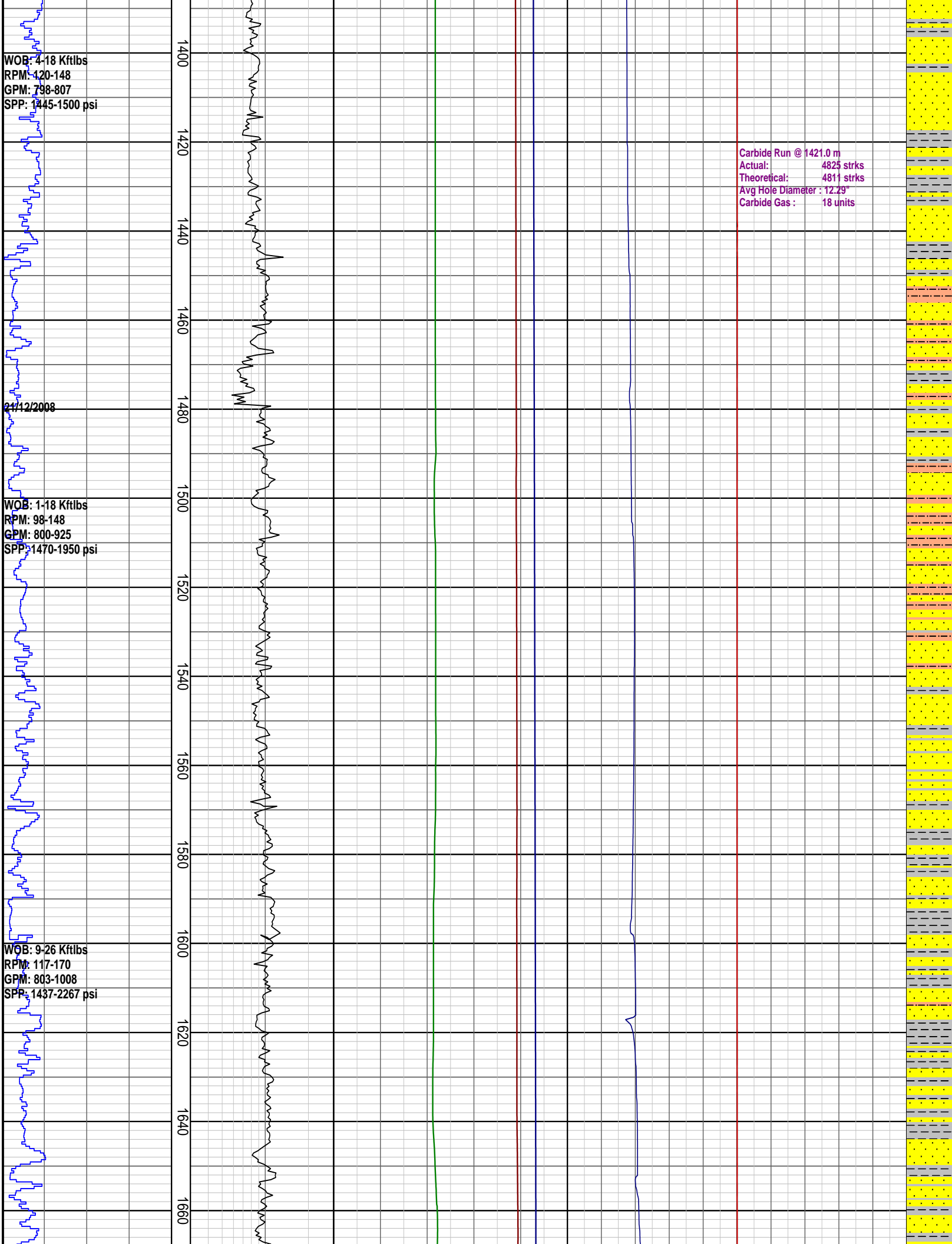
2/12/2008

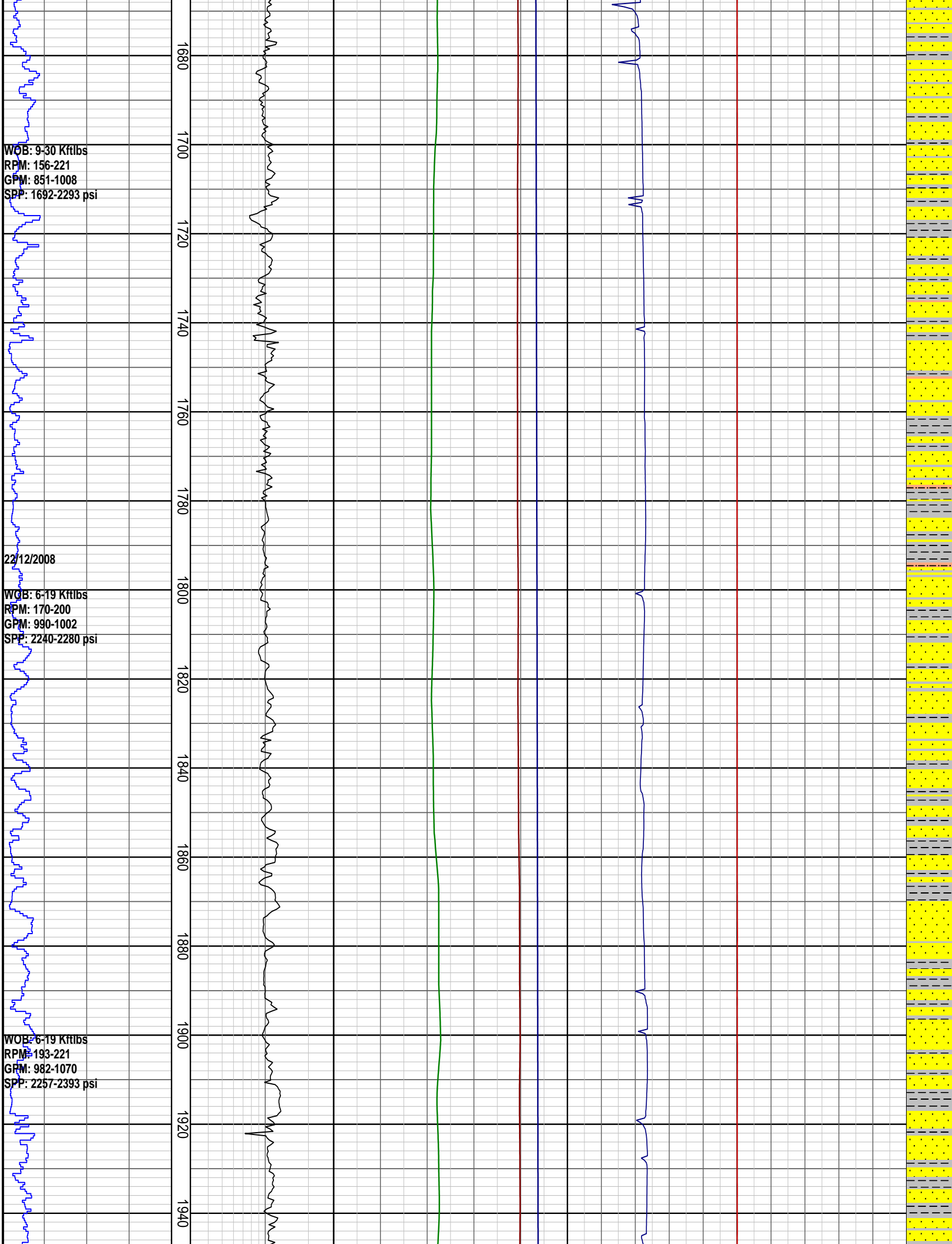
WOB: 1-18 Kftlbs
RPM: 98-148
GPM: 800-925
SPP: 1470-1950 psi

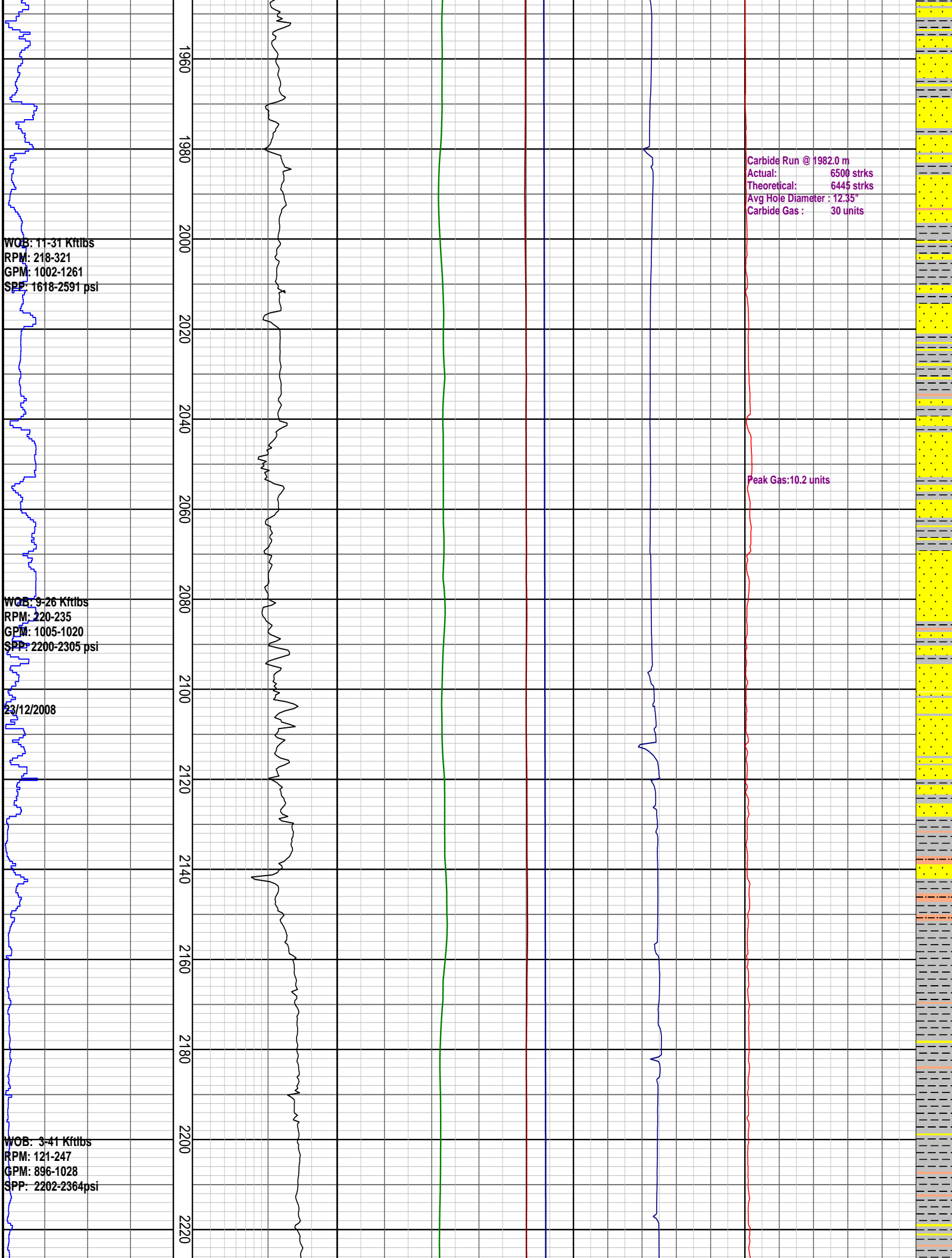
WOB: 9-26 Kftlbs
RPM: 117-170
GPM: 803-1008
SPP: 1437-2267 psi

1400
1420
1440
1460
1480
1500
1520
1540
1560
1580
1600
1620
1640
1660

Carbide Run @ 1421.0 m
Actual: 4825 strks
Theoretical: 4811 strks
Avg Hole Diameter : 12.29"
Carbide Gas : 18 units







WOB: 11-31 Kftlbs
RPM: 218-321
GPM: 1002-1261
SPP: 1618-2591 psi

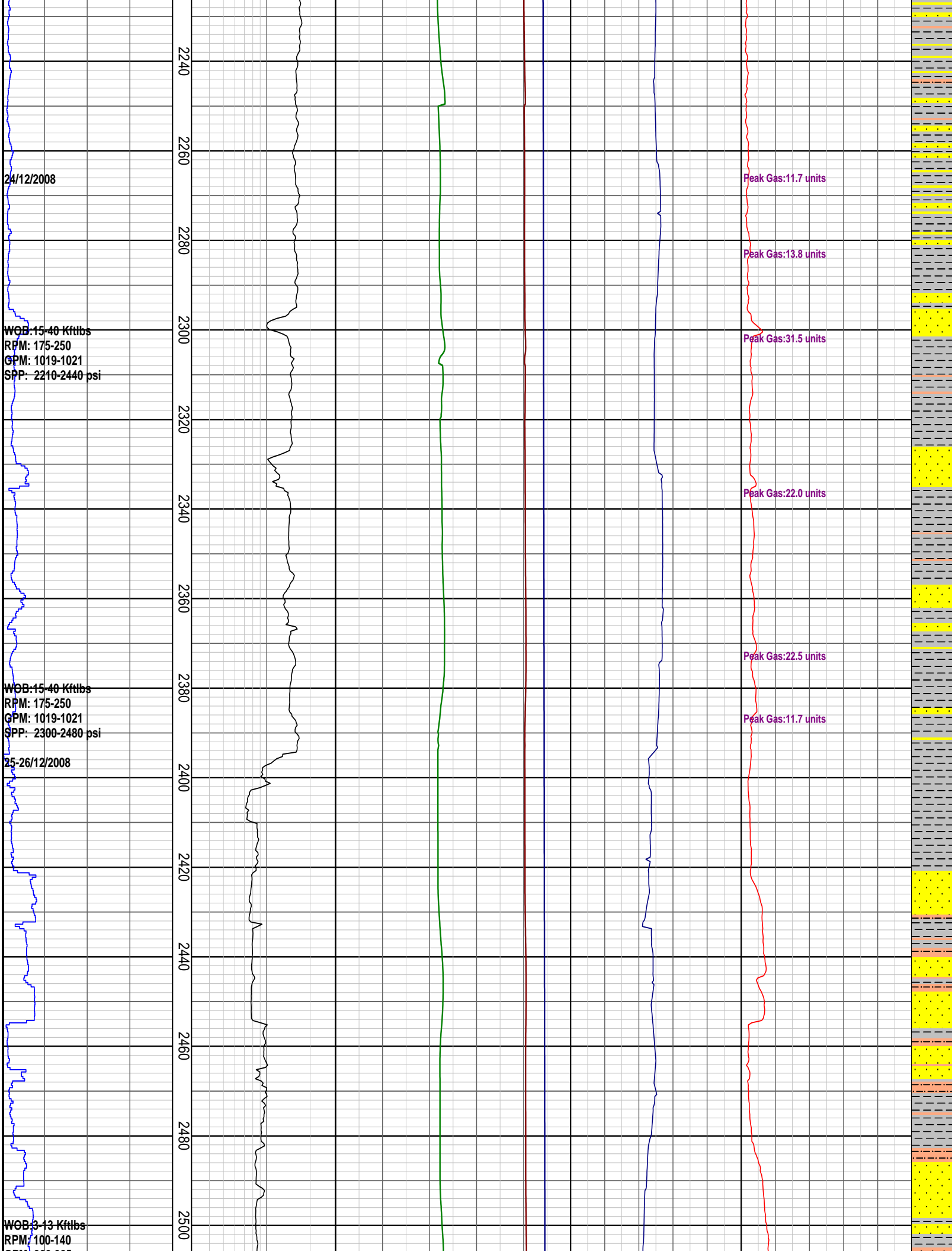
WOB: 9-26 Kftlbs
RPM: 220-235
GPM: 1005-1020
SPP: 2200-2305 psi

23/12/2008

WOB: 3-41 Kftlbs
RPM: 121-247
GPM: 896-1028
SPP: 2202-2364psi

Carbide Run @ 1982.0 m
Actual: 6500 strks
Theoretical: 6445 strks
Avg Hole Diameter : 12.35"
Carbide Gas : 30 units

Peak Gas:10.2 units



24/12/2008

WOB: 15-40 Kftlbs
RPM: 175-250
GPM: 1019-1021
SPP: 2210-2440 psi

WOB: 15-40 Kftlbs
RPM: 175-250
GPM: 1019-1021
SPP: 2300-2480 psi

25-26/12/2008

WOB: 3-13 Kftlbs
RPM: 100-140

2240
2260
2280
2300
2320
2340
2360
2380
2400
2420
2440
2460
2480
2500

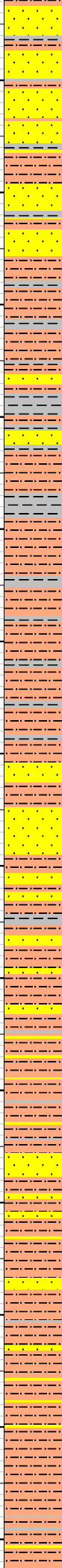
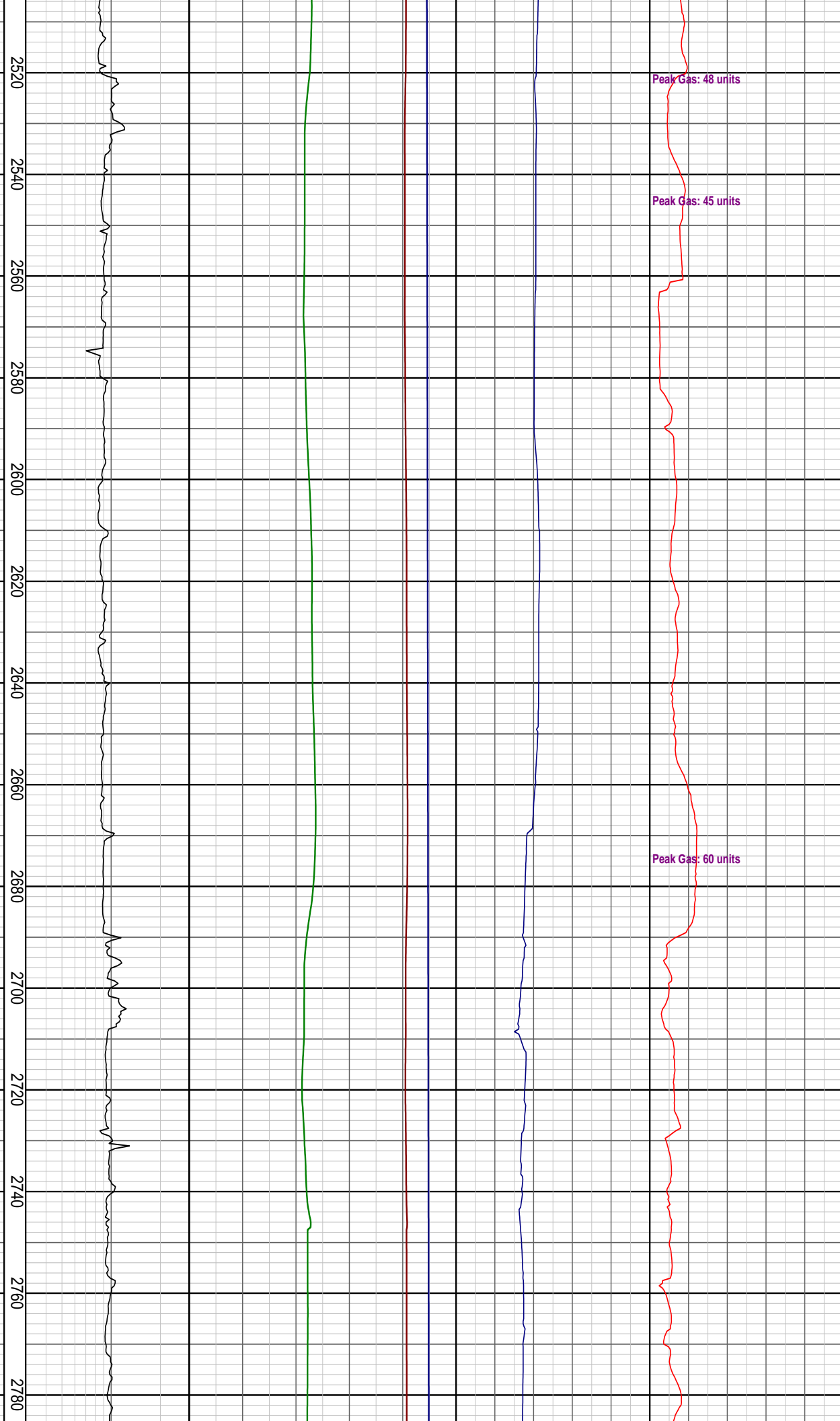
Peak Gas: 11.7 units
Peak Gas: 13.8 units
Peak Gas: 31.5 units
Peak Gas: 22.0 units
Peak Gas: 22.5 units
Peak Gas: 11.7 units

GPM: 900-925
SPP: 2045-2615 psi

WOB: 10-15 Kftlbs
RPM: 100-180
GPM: 900-905
SPP: 2105-2425 psi

27/12/2008

WOB: 10-20 Kftlbs
RPM: 100-180
GPM: 895-900
SPP: 2150-2385 psi



Set 9 5/8" Casing at 2800.3 m
WOB: 14.23 Kftlbs
RPM: 0-81
GPM: 897-902
SPP: 2028-2550 psi

FIT @ 2800.3 m with 10.3 ppg
EMW: 16.0 ppg @ 2720 psi

WOB: 1.14 Kftlbs
RPM: 15-139
GPM: 189-901
SPP: 700-2725psi

WOB: 10.20 Kftlbs
RPM: 70-78
GPM: 705-720
SPP: 2675-2780psi
04/01/2009

2800
2820
2840
2860
2880
2900
2920
2940
2960
2980
3000
3020
3040
3060

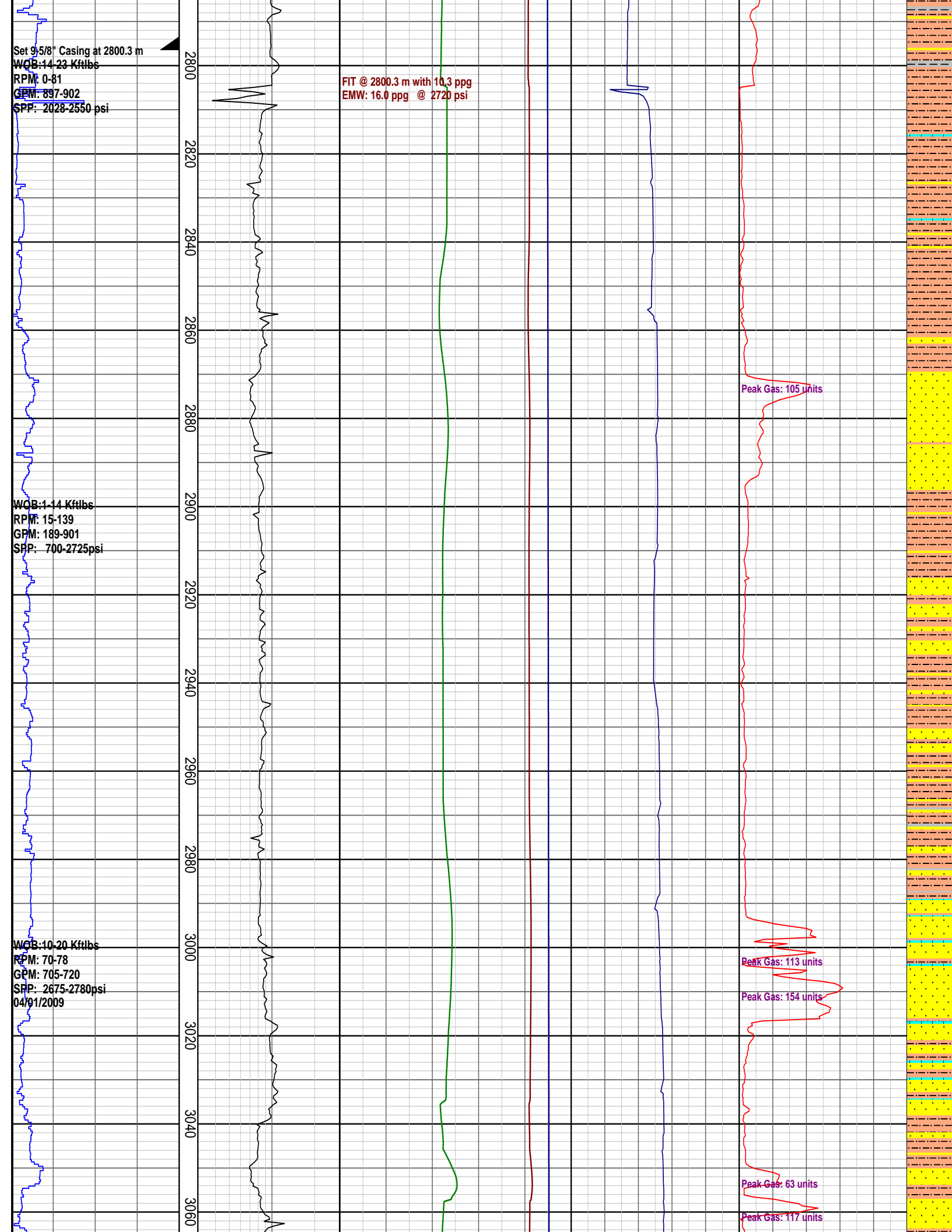
Peak Gas: 105 units

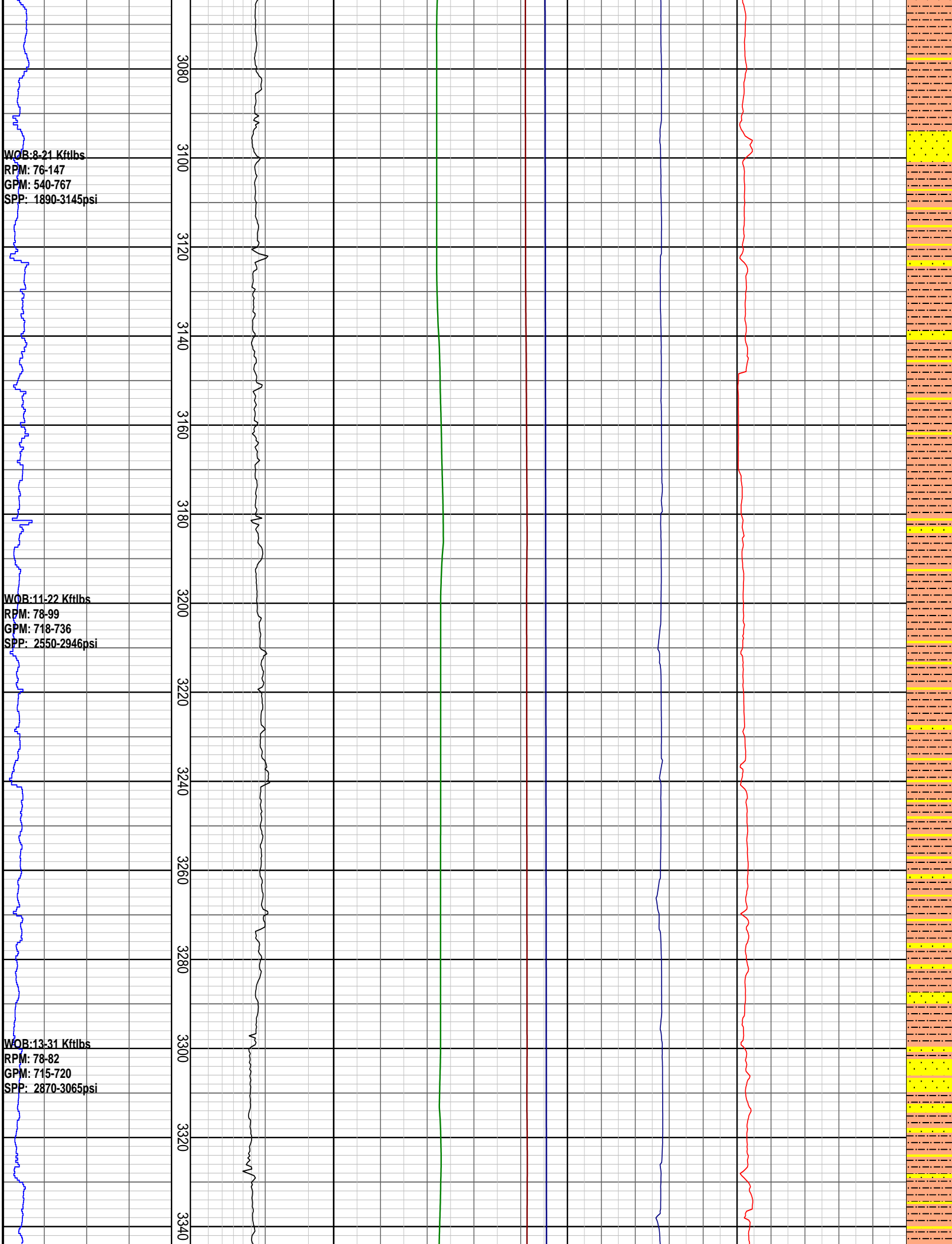
Peak Gas: 113 units

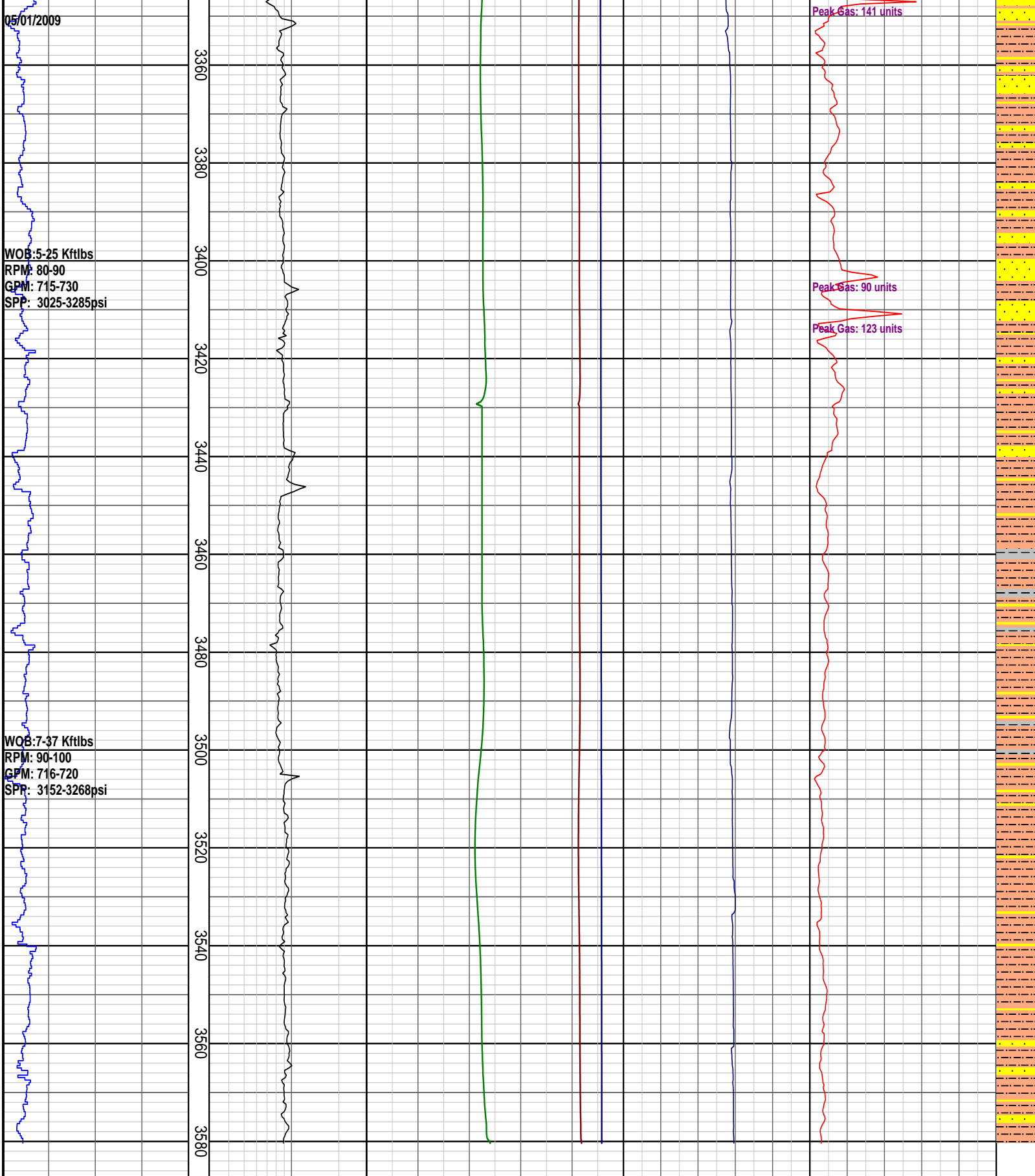
Peak Gas: 154 units

Peak Gas: 63 units

Peak Gas: 117 units







PRESSURE DATA PLOT

Rate of Penetration ROP	DRILLING EXPONENT DXC	PRESSURE DATA Pore Pressure	TEMPERATURE Temperature Out	GAS Total Gas	INTERPRETED LITHOLOGY
0.3 TVD meters 1:1000 50 100 150 200 m/hr	3	4 8 12 16 20 ppg Fracture Pressure	20 40 60 80 100 degC	50 100 150 200 250 unit	
		4 8 12 16 20			

ppg

Overburden Gradient

4 | 8 | 12 | 16 | 20
ppg